



Smoke Signals

Dilston, Windermere, Swan Bay Community Newsletter

We're on the Web

[http://www.winderdoon.com/
community/smokesignals](http://www.winderdoon.com/community/smokesignals)

Issue 153
August 2008

WHAT A GREAT COMMUNITY WE LIVE IN!

The RPDC has received 111 submissions on the design proposal for the Dilston bi-pass. All but 4 are against the proposed T intersections.

The RPDC wants and welcomes community input and will not put any pressure on the speakers. (The RPDC read all submissions.)

Those who made submissions have received letters inviting them to the RPDC hearing which will make a final and binding decision as to what will be built. If submission writers decide to speak they may fax the form 62335400 or may ring Karen Fyfe on 62333415.

Many have advised they will go and speak to their submission.

The date for the hearing has not been set, yet but will soon appear in the Saturday Examiner. We expect it will be in three or four weeks in Launceston and the more people who attend, even for a short time, the better.

For those speaking, the RPDC will be looking for something that gives your comments legitimacy, e.g. "I have been a resident for x years and know the conditions", "I have lived in NSW near similar "T" junctions", "I have driven for forty years", "I have held a PV licence".

There is no time limit for speakers, and those who have made submissions and cannot attend can nominate someone to read out a written statement to the committee.

You can ask questions of clarification of DIER, Pitt and Sherry and any other person or organization speaking in favour of the "T" junctions.

Our community is greatly indebted to Mr. Ron Goodes for his technical expertise and the enormous amount of time and effort he has put in researching all aspects of the issue and preparing alternatives.



A recent accident on the section of highway to be replaced.

Inside this issue:

Community Survey	2
Birds of The Tamar	3
Burning Restrictions	3
Community Ads	3
Progressive Dinner	4

Features

- Community Needs Survey
- Lapwings Survive without Foxes
- Progressive Dinners will bring the neighbours together and preserve our heritage church.

Community Needs Survey

Many of our residents are choosing to stay in homes they have owned and lived in for years.

Attracted by the river scenery and the rural lifestyle of Dilston/Windermere/ Swan Bay, these people are looking for support to help

them remain in the area they love, rather than moving into aged care facilities

Both Federal and State governments are encouraging moves to support our senior citizens in their own homes rather than having

to provide expensive group residential high care accommodation.

Some have expressed a desire to see the development of services such as a community bus and meals on wheels to assist them. ...Continued on p 2

Garden Club Notes

Anna Waterhouse



The month of June brought us to Merryn and Neil Mc Lelland's home. It was a perfect Winter's day, after the downpour the day before. A true blessing to us all especially the farmers.

Our usual "shared" meal, which we had inside, was thoroughly enjoyed by a good roll up of our members.

Afterwards we strolled around their picturesque garden with its little paths and old windmill. It goes right to the waters edge- a delight to behold. Thank you Merryn and Neil.

Our July gathering was at Marg and Jon Hosford's home. Again, the weather was very kind to us

enabling us to enjoy our lunch inside and out. Jon had his special "tin" heater going outside- beautifully warm and inviting. Our numbers were up for this time of year- not so many travelled abroad. They have done a huge amount since our last visit. They have planted lots of natives in the

large rock garden at the front and established a beautiful patio with a water feature and again native plants at the back. Their vegie garden, fruit trees and vines are all ready and waiting to produce in the Spring.

Many thanks Marg and Jon.

Next Meetings:

August 8th Maureen & Rob McLaine

September 12th Anna & Jonathan Waterhouse

October 10th Brian & Jacki Ralph

November 14th Val & Max Jansson

December 12th Noel & Ros Ryan

ts Towns Shearing

- You can choose "NO COST ADVERTISING" which means you pay nothing for marketing whether we sell your property or not
- Launceston's Number 1 and most successful Real Estate Company
- Comprehensive Buyer Database
- Two of the most experienced industry consultants specialising in North East Tasmania
- WANTED - Large rural holdings, Lifestyle Hobby Farms, Residential and Subdivisions

That's WHY more and more people are choosing Towns Shearing.

Sharon Fahey 0409 188 249
Wayne Riethoff 0418 504 742
Towns Shearing Real Estate, 58 Elizabeth Street, L'ton

Community Needs continued from P1.

There may be other support services that our community can establish with volunteer support.

- What would you want to see being supported within our community?
- What would you be prepared to support with your voluntary time?

Please email your opinions and ideas to :

smokesignals @bigpond.com

"Some have expressed a desire to see the development of services such as a community bus and meals on wheels to assist them"

Caltex Mount

Direction

Open 7 days per week- 6am to 7pm weekdays

8am to 7pm Saturday, 8am to 6pm Sunday

Full grocery lines-fish bait/gear-BBQ Gas

63948364

Signal Station Tavern

Bar, Lounge & Bottle-O Bottleshop
competitive prices

\$6 meals Thursday evenings

6PM TO 8PM

Friday & Saturday nights- full counter meals 6pm to 8pm

Sundays- 5pm to 8pm

Pizzas- eat in or take away

PHONE 6394 8228



Samantha Nast

...your at Home Hairdresser



0400 023 323



snast@netspace.net.au

"Offering convenient, professional hair services. Specialising in colours, cuts, weddings, parties and other special occasions"

Copy For
NEXT ISSUE

Due
**Friday September
26th**

For publication first week in October

**Email address:
smokesignals@bigpond.com**

**Or mail to:
454 Windermere Rd. Windermere
7252**

**WOULD YOU LIKE TO
ADVERTISE IN SMOKE
SIGNALS?**

1/6 Page \$15.00

1/12 Page \$7.50

book an ad in four issues and save:

1/6 Page \$40.00

1/12 Page \$20.00

Small Classifieds, Wanted to sell, etc
\$5 (one insertion)

Community Notices and Fund Raising
Notices are Free !!

Advertisements must be
accompanied by full name, address
and should state the number of
editions that it is to appear in.

Leave advertising copy at the
Windermere Store or email to:

smokesignals@bigpond.com

NEW

Would you like to subscribe to an
email delivery of Smoke signals?

Especially for those who no longer
live in the delivery area.

Send a request for subscription to :

smokesignals@bigpond.com

headed "subscribe Smoke Signals"

LOST YOUR COPY?

Smoke Signals on the web

http://www.winderdoon.com/comm
unity/smokesignals

Birds of The Tamar

by Jon Hosford

It never ceases to amaze me how birds
will survive the intrusion of humans
and adapt to continue to breed suc-
cessfully as long as introduced animals
are kept at bay.

We went away for 3 weeks in June
and on return we found that a pair of
masked lapwings had established a
nest in our rice grass mulched garden
bed in the front yard. Unperturbed by
our movements inside and out of the
house, the female patiently incubated
4 eggs and successfully hatched 4
chicks last week.



2 out and 2 under. Baby lapwings
explore their new world.

The baby birds walk as soon as they
are hatched and immediately forage
for food around the garden. The par-
ent role is to protect them from unwe-
lcome intrusions and to encourage
them to gain independence as quickly
as possible.

In mainland Australia these birds, like
many other species of ground
dwelling birds are threatened by foxes
and numbers are very low. In Tasma-
nia they are probably our most com-
mon bird.



DILSTON FIRE BRIGADE



A burning -off restriction applies to all
properties within the Launceston City
Council in the months of June, July &
August.

Please check with Brigade Officers as to
the current state of regulations before
you plan burning on your property.

Brigade Chief.

Rob Montague 63948377 (w) 6328
1336 (h)

GARDENER WANTED

Reasonable experience & creative.
4hrs per week minimum.

Contact Luke 0400 002 083

**Community Contacts -
FIRE:000**

- Dilston Hall: 6328 1348
- St. Matthias Church: 6328 1209
- Playgroup: 6328 1196
- Neighbourhood Watch: 6328 1189
- Brownies: 6328 1331
- Garden Club: 63281566
- CWA: 6328 1257
- Book Discussion Group: 6328 1231
- Amblers: 6328 1163
- Bird Watching: 6328 1163
- FIRE BRIGADE OFFICERS
- Rob Montague 6394 8377 (w)
- 6328 1336 (h)
- David Lake 0438 075 534
- Neville Jolly 6328 1309
- Jason Hingston 0407392457



Windermere Corner Store

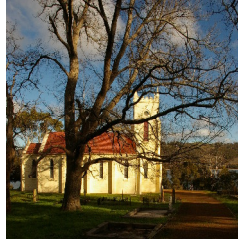
6328 1335

Sensational breakfasts, great lunches, a selection of cakes and slices,
prepared take-home meals. Takeaway pizzas, gourmet food lines, catering,
gift, jewellery, wrapping and cards, groceries, gas, bait

TRADING HOURS 7am – 6pm Every Day



ST MATTHIAS WINDERMERE



&

HOLY TRINITY LAUNCESTON



Progressive Dinner

TO RAISE FUNDS TO-
WARDS THE NEW ROOF

FRIDAY- AUGUST 29

6:00pm NIBBLES & DRINKS

Meryn & Neil McLelland's home

385 Windermere Rd

7:30pm MAIN COURSE (BYO Wine)

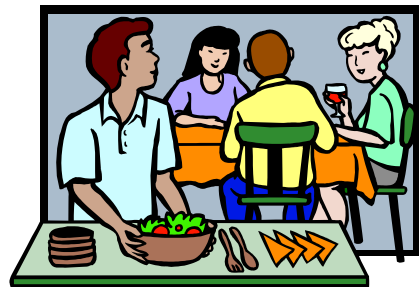
Margaret & Jon Hosford's home

454 Windermere Rd

9:00pm SWEETS & COFFEE

Sue & John Speed's home

470 Windermere Rd



LIMIT OF 26 PERSONS

TICKETS \$25.00 PER PERSON

Tickets can be purchased from

Meryn, Jon or Margaret

and Sue or John

Contact No 6328 1209

SILENT AUCTION

To be held along with Sweets
and Coffee

Anyone who would like to do-
nate an item to be auctioned to-
wards the cost of the roof
please ring Sue Speed

COMING EVENTS Holy Trinity

Friday 8 August	Cocktail Party to open
6:30—9:30pm	Launceston Art Society
\$15 catered	Exhibition

If you are unable to make it on 29 August, not all is lost. There is the possibility that we will offer another Progressive Dinner 3 October

This document was created with Win2PDF available at <http://www.daneprairie.com>.
The unregistered version of Win2PDF is for evaluation or non-commercial use only.